



# Lesson 2.1: CIED Mission Enabling Assets

# Overview

2.1.1 Search and Detect

2.1.2 Explosive Ordnance  
Disposal

2.1.3 Exploitation

2.1.4 Electronic Counter  
Measures

# Terminal Learning Objectives

At the end of this lesson, the participant will understand the role of different C-IED capabilities commonly found in Peace Support Operations.

## 2.1.1 Search and Detect

---

# Search and Detect

## Role of Search

- Locating specific Targets
  - Terrorist resources
  - IED Components
- Offensive Search
- Defensive Search

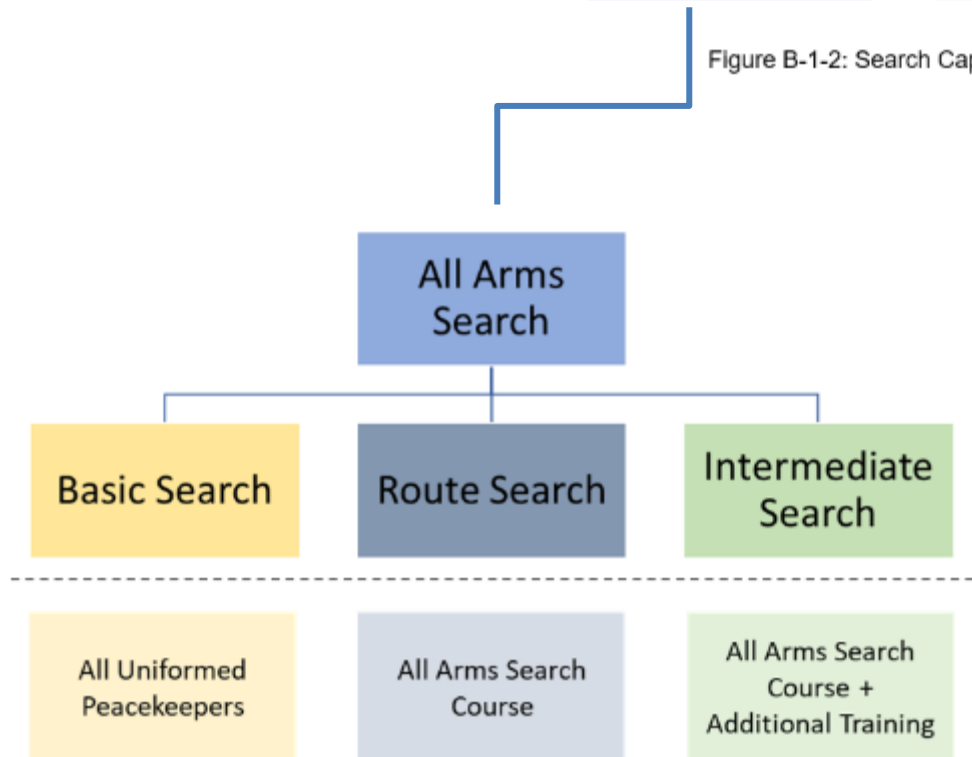
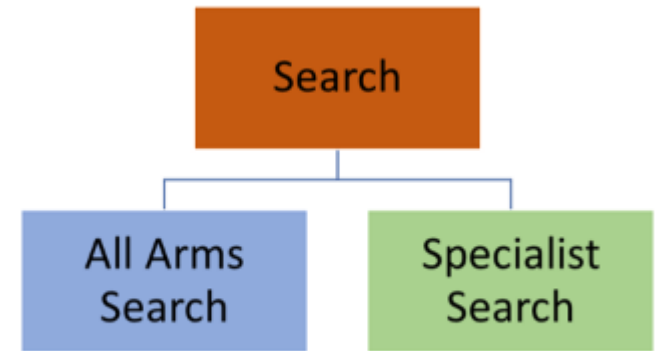


Figure B-1-3: Search Capabilities (2)

# Search and Detect

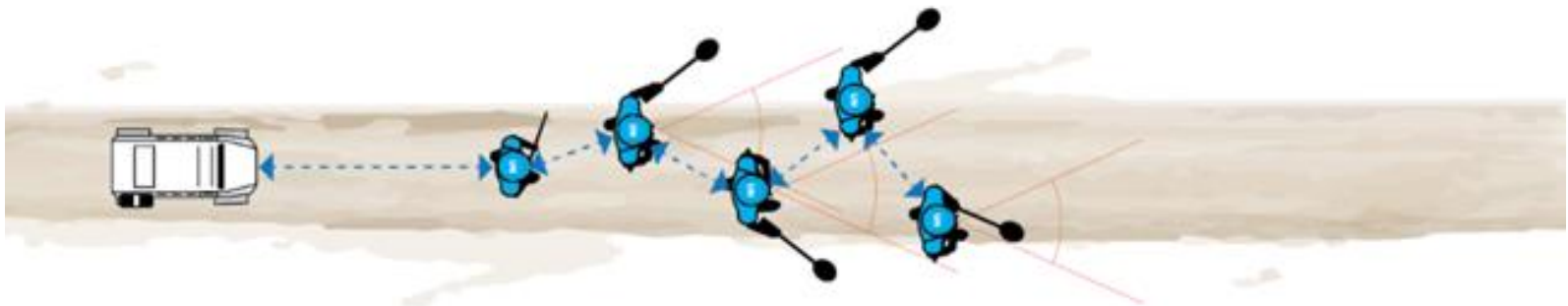
## Basic Search

- Basic Skills for all personnel deploying into Peace Support Operations.
- These are skills you will learn on this course.
- These include:
  - Counter IED drills – 5/25m check
  - Vulnerable point checks
  - Immediate actions on suspecting and IED/EO – 5Cs drill
  - Person and Vehicle search

# Search and Detect

## Intermediate Search

- Operate as a team.
  - Team Commander
  - 2IC
  - 4 Searchers (6 for ATMIS)
- Distinct function to EOD
- All mobility Units must have 1-2 teams
- Specially equipped with detectors and ECM
- Planning Considerations – Time



# Search and Detect

## Search – Explosive Detection Dogs

- Explosive Detection Dogs (EDD) trained to locate and correctly indicate explosive substances
- Target active threats
- Considerations:
  - Handler + Dog
  - Special support required
  - Early planning





# Search and Detect

## Search – Explosive Detection Dogs

- Limitations:
  - Time
  - Wind
  - Rain
  - Heat



# Search and Detect

## **Route Clearance Package (RCP) or Mission Enabling Unit (MEU)**

- Identify and remove IED and explosive hazards
- Provide Freedom of movement
- Specifically Equipped
- Capability varies based on contributing countries





## 2.1.2 Explosive Ordnance Disposal

---

# EOD

## EOD

- Detection
- Identification
- On-site evaluation
- Rendering safe
- Recovery
- Disposal

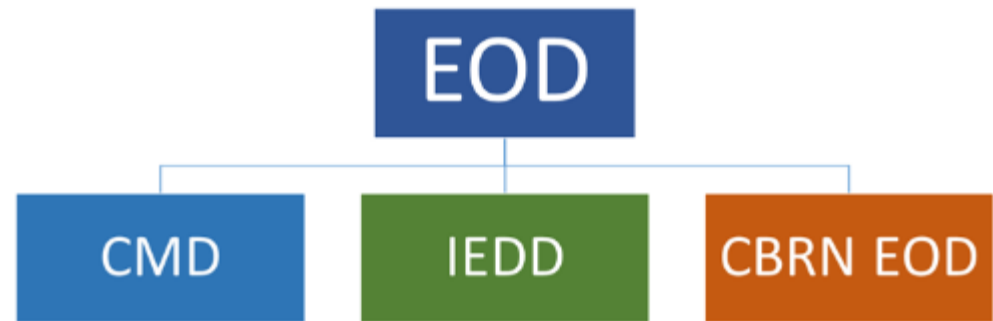


Figure 1-1: The three branches of EOD

# EOD

## **Role of EOD Units**

As an integral part of a UN force, the fundamental role of EOD units is to counter EO threats in support of peacekeeping operations.

# EOD

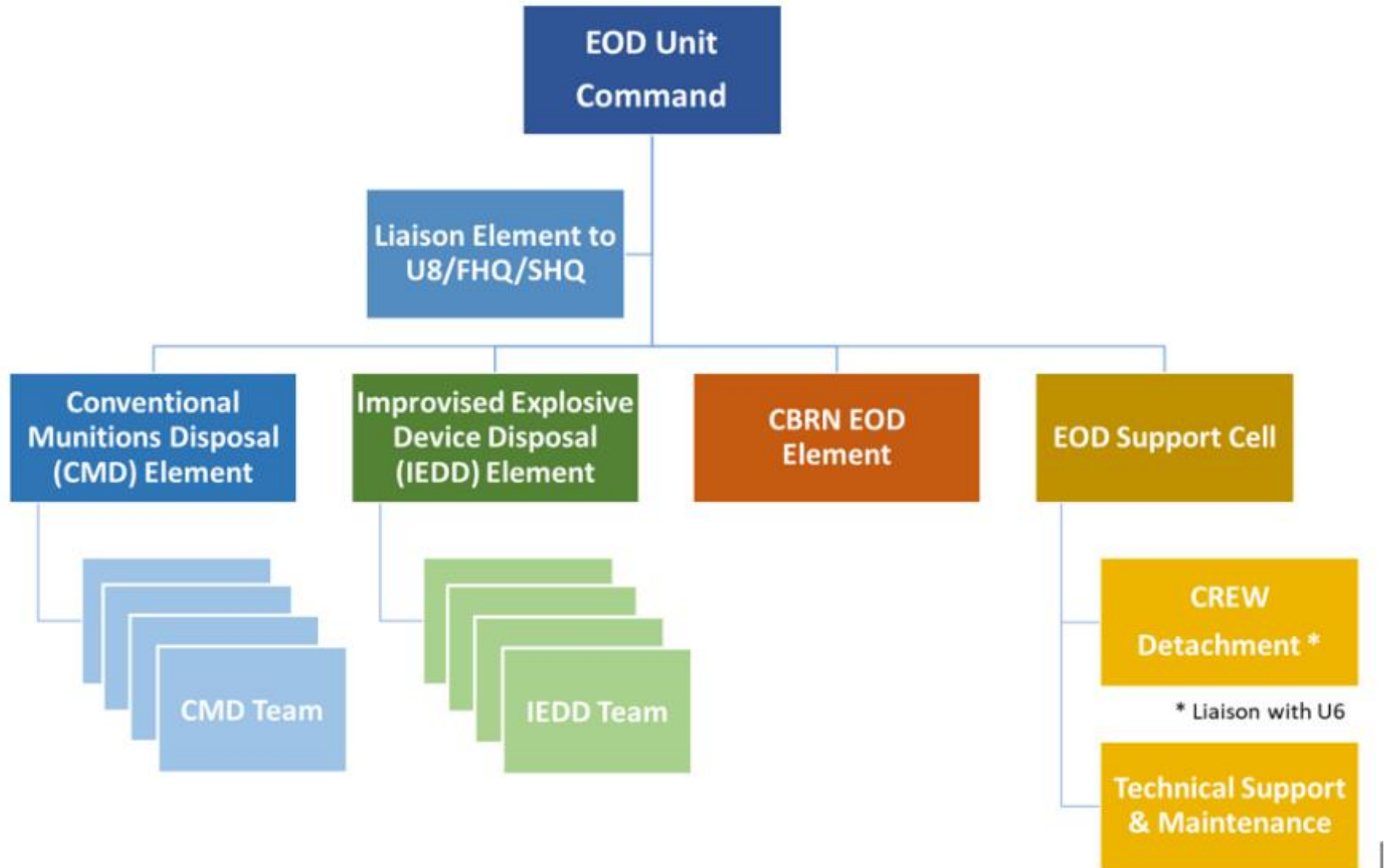


Figure 3-1: Generic EOD Unit structure

# EOD

## EOD Unit Tasking

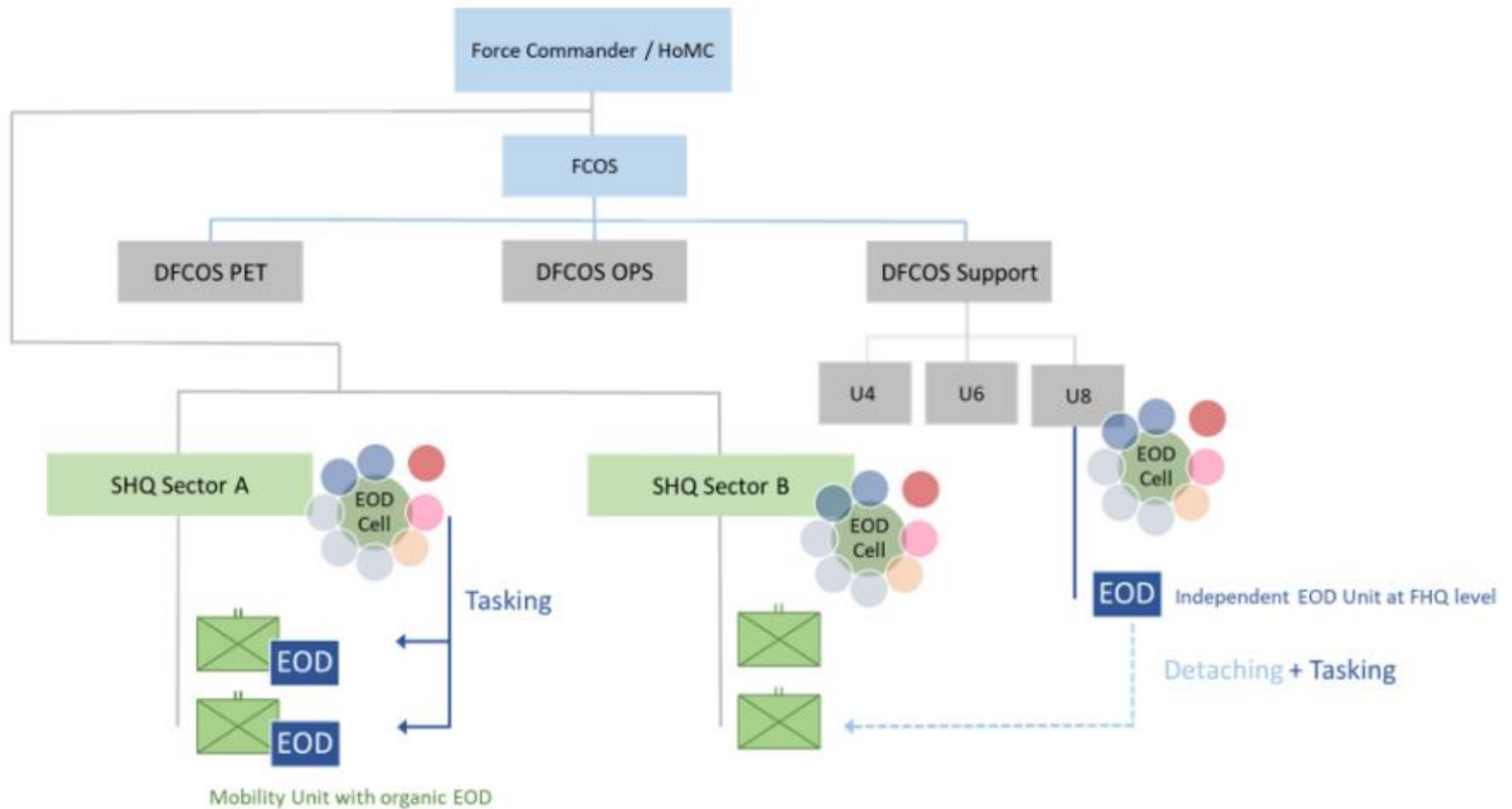


Figure 1-3: Detachment/Attachment of EOD Units and Tasking

## **Conventional Munitions Disposal (CMD)**

Some of the roles of CMD include:

- Mine clearance operations.
- Dispose of ERW discovered
- Dispose of deteriorated or damaged ordnance
- Not all CMD operators are trained to the same level and they must operate within the limits of their training.





# EOD

## IEDD

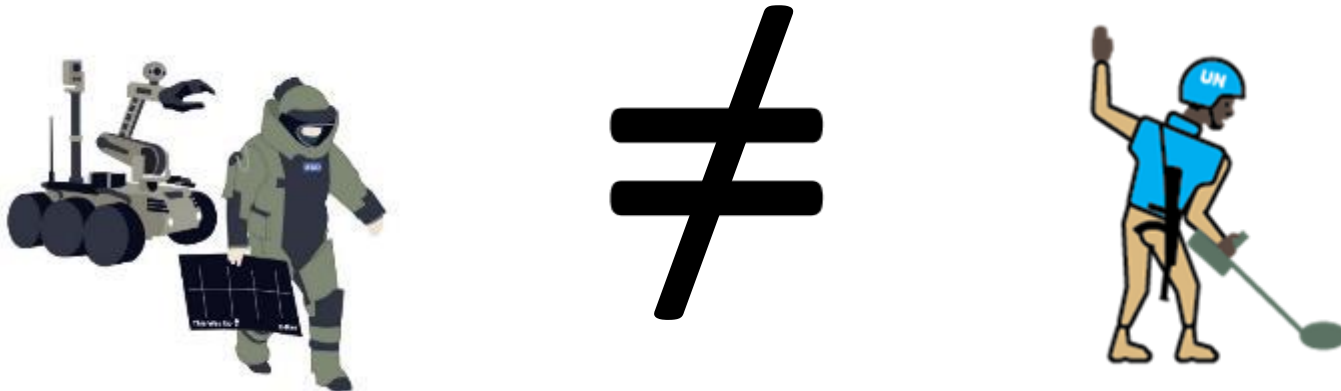
- IEDD component of EOD
- Operator specific selection and training
- IEDD capabilities driven by assessed threat
- Not all IEDD operators are trained to the same level and they must operate within the limits of their training.



# EOD

## **EOD is not a Search Asset!**

- EOD assets provide a different function to Search Teams
- EOD (especially IEDD Teams) are not used for searching for IEDs on routes for patrols and convoys
- Search teams are used to find IEDs, EOD dispose of IEDs.
- IEDD operators can advise on employment of search teams
- Search teams can support IEDD tasks.





## 2.1.3 Exploitation

---

# C-IED Mission Enabling Assets

## Technical Exploitation:

- Carried out by specialists
  - EOD operators trained in Post/pre-Blast Investigation
  - Specialist Weapons Technical Investigators.
  - Device must be rendered safe before any exploitation
- 3 Levels of Exploitation:
  - Field Exploitation
  - In Country Exploitation
  - Out of Mission Area Exploitation



# C-IED Mission Enabling Assets

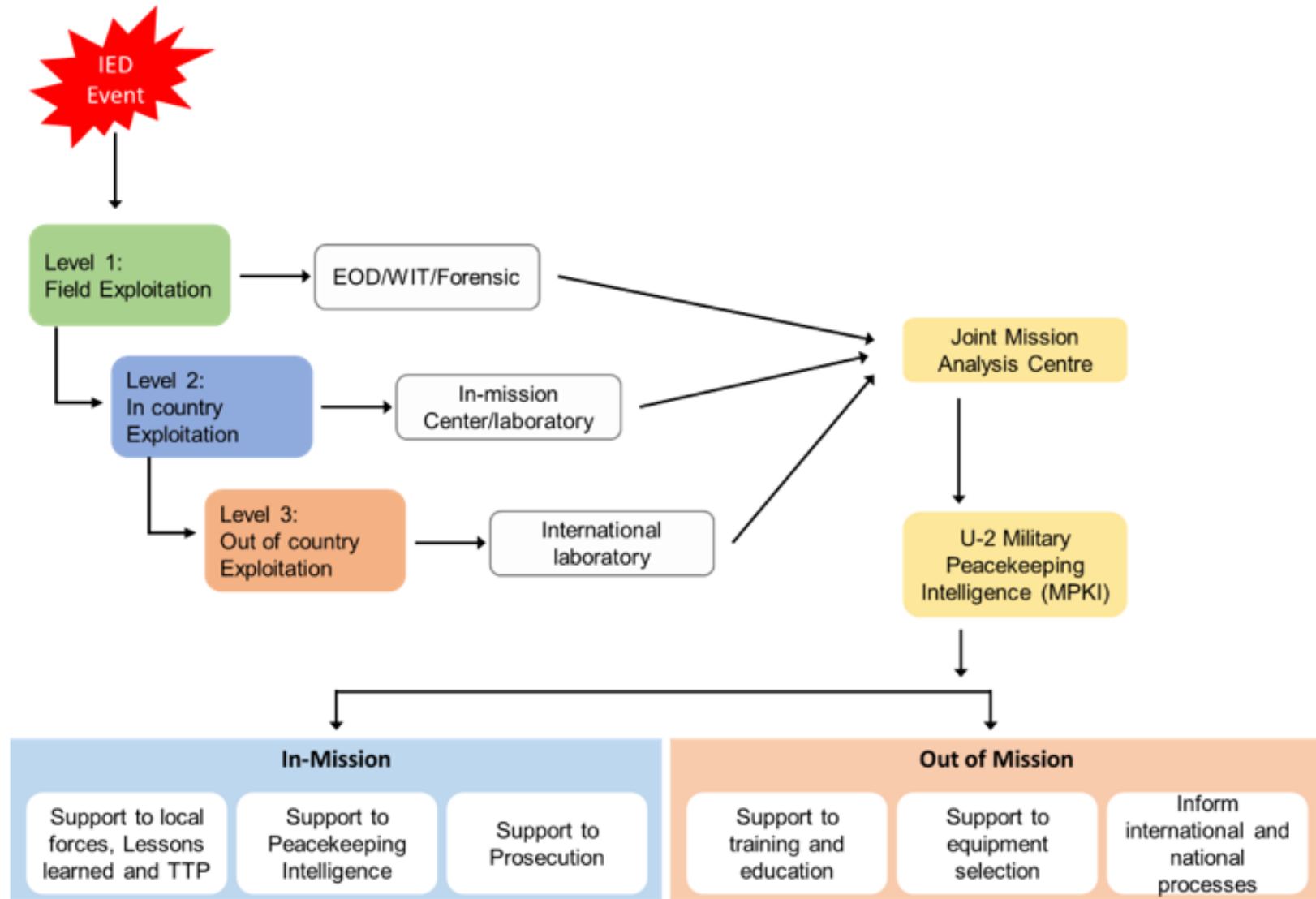


Figure 4-9: Levels of Exploitation, Responsibilities and Effects



## 2.1.3 Electronic Counter Measures (ECM)

---

# C-IED Mission Enabling Assets

**Electronic Counter Measure (ECM)** - Protective measure designed for use against threat of remote controlled improvised explosive devices (RCIED)

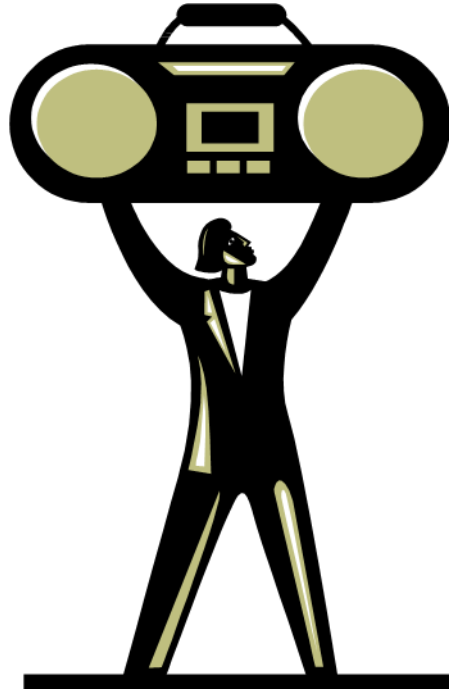


# C-IED Mission Enabling Assets



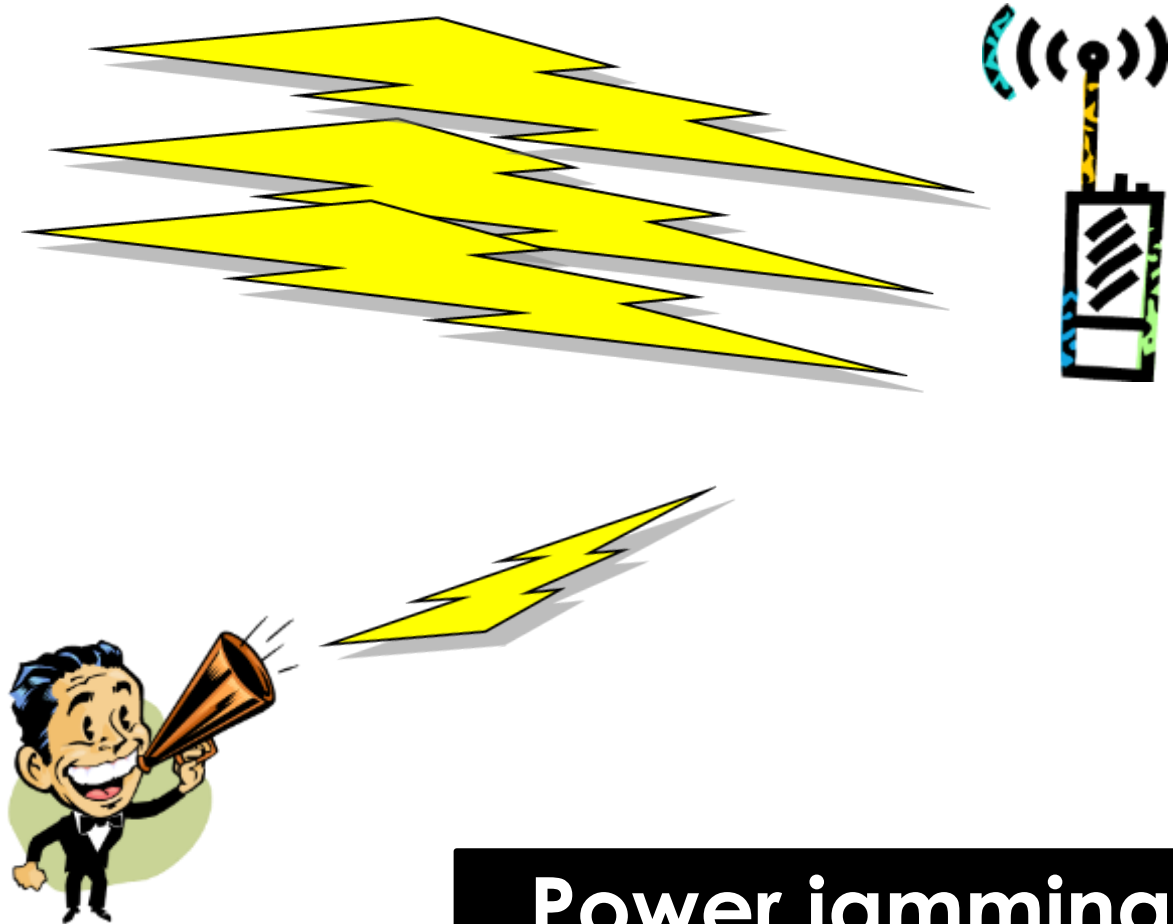


# C-IED Mission Enabling Assets



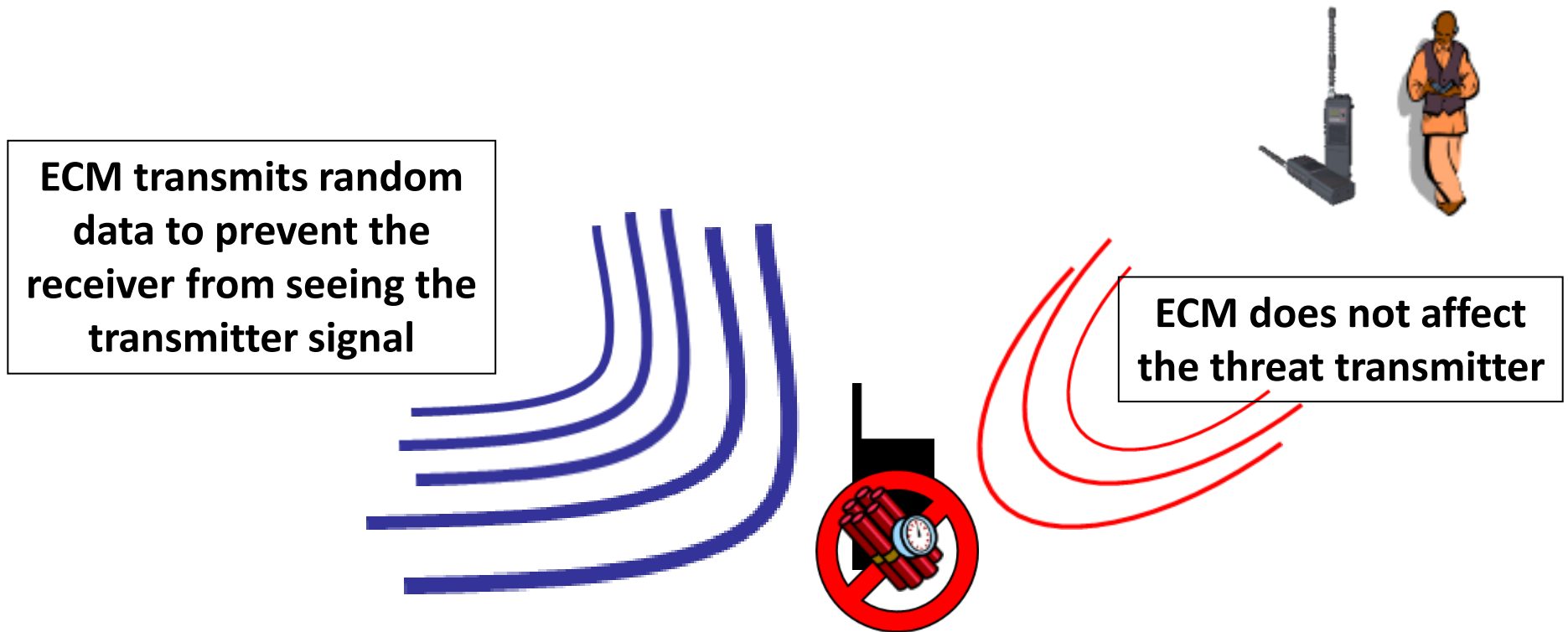
ECM System

ECM transmits an overwhelming signal such that the receiver cannot determine the transmitters signal



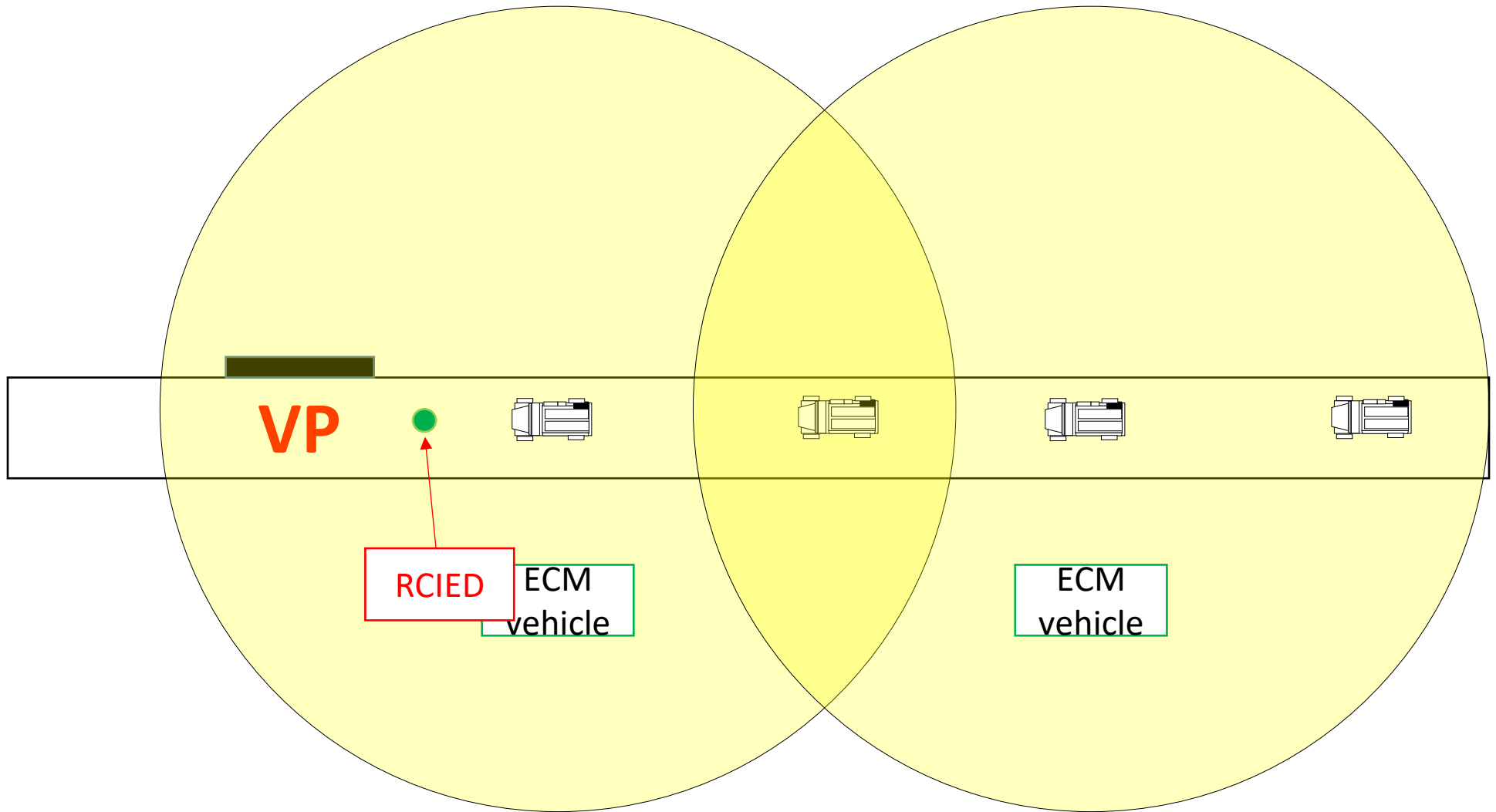
**Power jamming**

# C-IED Mission Enabling Assets



**Sequence manipulation**

# C-IED Mission Enabling Assets



# Questions?

